

EMPOWERING FACULTY, ENABLING ALL: KENET'S CAPACITY-BUILDING INITIATIVES FOR INCLUSIVE E- LEARNING

ZEINAB MZUNGU

Instructional Designer

zmzungu@kenet.or.ke

Agenda

- **KENET Brief Introduction**
- **Capacity Building Initiatives**
- **Statistics**
- **Faculty Training**
- **Digital Accessibility and Inclusion in eLearning**
- **Universal Design for Learning (UDL)**
- **Course Design**
- **LMS Focus**
- **Challenges and Mitigations**
- **What next?**
- **Q&A**



KENET Brief Introduction

- The Kenya Education Network (KENET) stands as a pivotal organization in Kenya, serving as the National Research and Education Network (NREN).
- Aside from affordable connectivity, Its core mission revolves around the advancement of digital transformation and the promotion of inclusive educational practices within its extensive network of over 200 member institutions.

Capacity Building Initiatives

✓ Faculty Training

Techies Training ✓

✓ Online Self-Paced Courses

Webinars ✓



Statistics

 ONLINE COURSES

2,206

 FACULTY

5,013

2021 - July 2024

Faculty Training



**Instructional &
Multimedia
Course Design**




**Moodle
Administration
for Instructors**



**Educational
Technology Tools**

Digital Accessibility and Inclusion in eLearning

Why it's important

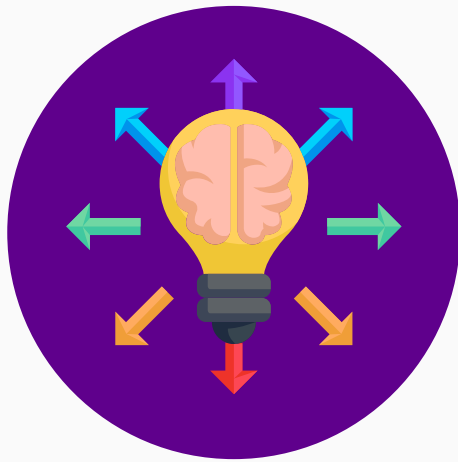
- 
- **Equitable Learning Opportunities**
 - **Enhanced Engagement**
 - **Improved Retention**
 - **Wider Reach**
 - **Legal and Ethical Responsibility**
 - **Future-Proofing**

Universal Design for Learning (UDL)

KENET's commitment to digital inclusion is grounded in Universal Design for Learning (UDL) principles, essential for guiding faculty in creating inclusive eLearning environments that accommodate varied learning styles and abilities.



A Proactive Mindset



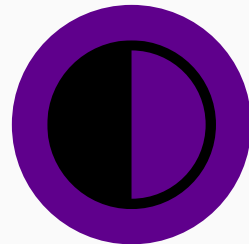
▶ **Result: Naturally accessible and inclusive materials**

- Start with the right mindset from the beginning of course creation
- Move beyond checklists and guidelines
- Consider diverse learner needs proactively
- Avoid retrofitting content later

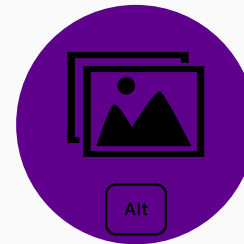
Course Design



Colour



Contrast



ALT Text



Clear Language



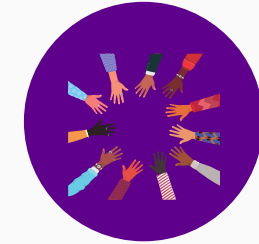
Video Captions



Audio Transcripts



Descriptive link text



Diverse Examples

LMS Consideration

▶ **Proper heading structure and navigation**

▶ **Keyboard accessibility**

▶ **Screen reader compatibility**

▶ **Progress tracking and feedback mechanisms**

▶ **Content optimization and responsive design for various devices**

▶ **Alternative assessment methods and activities**

▶ **Customizable interface (font size, colors)**

▶ **Offline access options**

The Results



Challenges Encountered and Mitigations

- While the capacity building initiatives have been instrumental in making eLearning accessible to all learners, here are some of the challenges we have encountered and the mitigations:

Lack of Institutional Policies and Support

Advocate for the adoption of accessible and inclusive learning policies in every institution

Challenges Encountered and Mitigations

**Resistance to change
by some faculty**

Foster a culture for community support and instilling empathy by showcasing real scenarios of students struggle when content is inaccessible

Challenges Encountered and Mitigations

Training Cost

KENET has standardized training materials and provides user manuals/guides, also, calls for self-sponsored training programs

What next?

- **Expanding Research and Innovation in EdTech working group on digital accessibility and inclusion.**
- **Guide Institutions on Drafting Accessible and Inclusive Learning Policies.**



THANK YOU

www.kenet.or.ke

Jomo Kenyatta Memorial
Library, University of Nairobi
P. O Box 30244-00100, Nairobi.
0732 150 500 / 0703 044 500
support@kenet.or.ke