

# Adaptation to the Impacts of Climate Change in Kigali, Rwanda: Challenges and Opportunities.

Poster Presentation

## INTRODUCTION

Climate change poses significant challenges to Kigali, Rwanda, with rising temperatures, heavy rainfall, and extreme weather impacting urban land uses, infrastructures, and public health. This research examines adaptation strategies to enhance resilience in vulnerable urban communities.

## OBJECTIVES

This research aims to identify effective adaptation strategies for key sectors, evaluate the success of community-led initiatives towards climate resilience adoption, and address barriers like funding and governance.

## PRELIMINARY FINDINGS

### Climate Change Adaptation Strategies

#### Familiarity with in Community

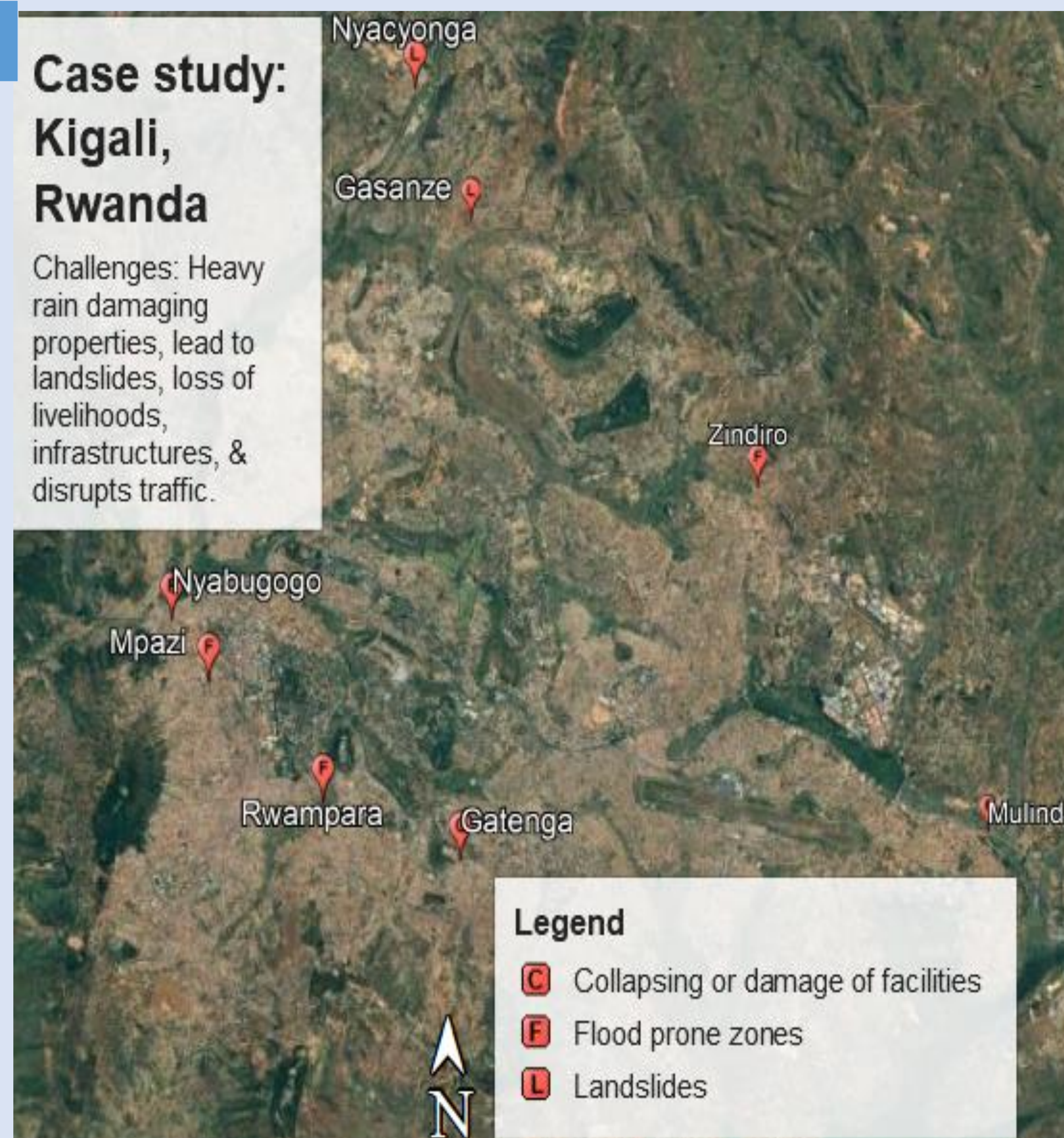


## METHODOLOGY

Mixed-Methods Approach combining qualitative (interviews, workshops) and quantitative (surveys, GIS) data. The method uses GIS mapping to Identify flood-prone areas, participatory workshops to Integrate local knowledge for sustainable solutions, and case studies to review adaptation practices in similar contexts.

### Case study: Kigali, Rwanda

Challenges: Heavy rain damaging properties, lead to landslides, loss of livelihoods, infrastructures, & disrupts traffic.



## IMPLICATIONS

- ❑ Incorporate climate change adaptation policies with urban land use plans.
- ❑ Strengthen community participation and governance.
- ❑ Secure funding for scalable, sustainable practices.
- ❑ Promote climate-resilient adoption

## ACKNOWLEDGEMENT

I express my sincere gratitude to the residents and community leaders of Kigali for their invaluable insights and participation in this study. Their willingness to share experiences with climate change impacts has been instrumental. I also appreciate the support of colleagues and mentors who provided feedback and encouragement for this research.

